

# 香煙焦油徘徊中等級別

## 試驗樣本及方法

第28次香煙試驗已由政府化驗師完成，試驗樣本共89個，其中82個牌子在上一次香煙試驗已包括在內，新加入7個牌子。試驗樣本由海關職員在2001年1月至12月期間，每月抽樣搜集。試驗是依據國際標準化組織 (ISO) 所訂立的方法和程序進行。

## 試驗結果

是次試驗所得各樣本的焦油類別，依據《吸煙(公眾衛生)條例》，分別如下：

焦油含量低(每枝9毫克或以下)——  
38個牌子

焦油含量中(每枝10至14毫克)——  
31個牌子

焦油含量高(每枝15至17毫克)——  
20個牌子

共有66個牌子的香煙所標示的焦油及/或尼古丁類別與政府的化驗結果不符，但這些牌子的偏差，除1個牌子外，均在政府化驗師就有關鑒定公布的偏差寬限之內。

樣本的最高和最低焦油及尼古丁含量見表一。

## 平均焦油及尼古丁不變

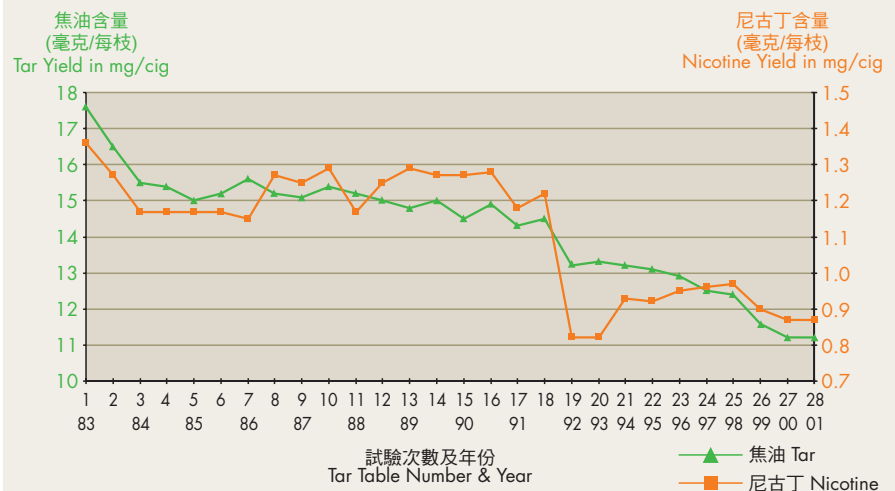
是次試驗中，平均焦油含量是每枝11.2毫克，平均尼古丁含量每枝0.87毫克，跟上一次(第27次)比較，兩者平均含量不變。

### 表一：最高和最低焦油及尼古丁含量

	焦油含量 (牌子)	尼古丁含量 (牌子)
最高	17毫克 / 每枝 (中華香煙廿枝裝、硬盒特製紅中南海廿支裝、薄荷多好廿枝裝)	1.5毫克 / 每枝 (中華香煙廿枝裝)
最低	1毫克 / 每枝 (健牌 No. 1 廿枝裝)	0.1毫克 / 每枝 (健牌 No. 1 廿枝裝)

## 過去28次香煙試驗報告結果

### Trends of Average Tar and Nicotine Yields of the "Best-Selling Cigarettes" Brands in Hong Kong



註：由92年開始，試驗由每年兩次改為一次。

## 香煙的焦油及尼古丁含量 TAR AND NICOTINE YIELDS OF CIGARETTES

由政府化驗師從2001年1月至12月所收集的樣本測定

As determined by the Government Chemist from samples obtained during the period of January - December 2001

牌子 BRAND	焦油(毫克/每枝) TAR YIELD (mg/cig)	尼古丁(毫克/每枝) NICOTINE YIELD (mg/cig)	
<b>焦油含量低(0-9毫克焦油/每枝) LOW TAR (0-9 mg tar/cigarette)</b>			
KENT 1 MG Lights Box 20's +	健牌 No. 1 廿枝裝 +	1	0.1
SILK CUT Ultra Mild (Box) 20's +	至醇時運硬盒廿枝裝 +	4	0.4
KENT Superlights King Size Box 20's +	硬盒超特醇健牌廿枝裝 +	6	0.5
MILD SEVEN Super Lights Box 20's +	超特醇萬事發廿枝裝 +	6	0.5
SALEM Super Menthol Box 20's +	硬盒薄荷沙龍廿枝裝 +	6	0.5
CAPRI Slims Lights Menthol (Box) 20's +	醇卡碧薄荷廿枝裝 +	7	0.5
DAVIDOFF Lights (Box) 20's +	醇 DAVIDOFF 廿枝裝 +	7	0.5
DAVIDOFF Lights Menthol (Box) 20's +	醇薄荷DAVIDOFF廿枝裝 +	7	0.6
DUNHILL Lights Filter Deluxe (Box) 20's +	醇登喜路廿枝裝 +	7	0.5
DUNHILL Menthol Lights (Box) 20's +	特醇薄荷登喜路廿枝裝 +	7	0.5
SILK CUT (Box) 20's +	時運硬盒廿枝裝 +	7	0.6
CARTIER VENDOME Lights (Box) 20's +	醇卡地亞明珠廿枝裝 +	8	0.6
CARTIER VENDOME Menthol Lights (Box) 20's +	醇薄荷卡地亞明珠廿枝裝 +	8	0.6
DJ MIX (Lemon) Fresh Filter Box 20's	DJ MIX 廿枝裝	8	0.5
KENT Deluxe Lights Box 20's +	特醇健牌廿枝裝 +	8	0.7
KENT Fresh Lights Box 20's +	硬盒醇薄荷健牌廿枝裝 +	8	0.6
LIUSHUIYIN Lights Charcoal Filter Box 20's +	硬盒中南海廿枝裝 +	8	0.7
MARLBORO Lights Box 20's +	特醇萬寶路硬盒廿枝裝 +	8	0.7
MARLBORO Lights Menthol 100's Box 20's +	特長醇薄荷萬寶路硬盒廿枝裝 +	8	0.7
MARLBORO Lights Menthol Box 20's +	特醇薄荷萬寶路硬盒廿枝裝 +	8	0.6
MARLBORO Lights Soft P. 20's +	特醇萬寶路廿枝裝 +	8	0.6
MILD SEVEN Lights Box 20's +	硬醇萬事發廿枝裝 +	8	0.6
SALEM LSS Lights Box 20's +	輕煙霧沙龍硬盒廿枝裝 +	8	0.6
SALEM Lights Box 20's +	醇沙龍硬盒廿枝裝 +	8	0.7
STATE EXPRESS 555 Lights (Box) 20's +	醇三個五廿枝裝 +	8	0.7
VIRGINIA Slims Lights Menthol (RCBox) 20's +	醇維珍妮薄荷廿枝裝 +	8	0.6
WINSTON Lights Box 20's +	醇硬盒雲絲頓廿枝裝 +	8	0.7
YVES SAINT LAURENT Lights Luxury 100s (Box) 20's +	聖羅蘭長煙廿枝裝 +	8	0.7
CAMEL Lights Box 20's +	硬盒醇駱駝廿枝裝 +	9	0.8
CAPRI Superslims Menthol (Box) 20's +	卡碧薄荷長煙廿枝裝 +	9	0.7
HILTON Lights Box 20's +	硬盒特醇希爾頓廿枝裝 +	9	0.7
MARLBORO Lights 100's Box 20's +	特長醇萬寶路硬盒廿枝裝 +	9	0.7
MILD SEVEN Charcoal Filter Box 20's +	硬盒萬事發廿枝裝 +	9	0.6
SALEM Lights 100s Box 20's +	硬盒特長醇沙龍廿枝裝 +	9	0.8
VICEROY Lights King Size Box 20's +	硬盒醇總督廿枝裝 +	9	0.7
VICEROY Lights Menthol King Size Box 20's +	硬盒醇薄荷總督廿枝裝 +	9	0.8
WINFIELD Lights Box 25's +	醇威豪硬盒廿五枝裝 +	9	0.7
YVES SAINT LAURENT Menthol Lights 100s (Box) 20's +	醇聖羅蘭薄荷長煙廿枝裝 +	9	0.7
<b>焦油含量中(10-14毫克焦油/每枝) MIDDLE TAR (10-14 mg tar/cigarette)</b>			
HILTON Lights Menthol Box 20's +	醇希爾頓薄荷硬盒廿枝裝 +	10	0.8
MARLBORO Medium Box 20's +	全醇萬寶路硬盒廿枝裝 +	10	0.8
YVES SAINT LAURENT Menthol Luxury 100s (Box) 20's +	聖羅蘭薄荷長煙廿枝裝 +	10	0.8
DAVIDOFF Classic (Box) 20's +	DAVIDOFF CLASSIC廿枝裝 +	11	0.7
DOUBLE HAPPINESS Premium (Box) 20's +	特級硬盒紅雙喜廿枝裝 +	12	0.9
KENT Deluxe 100s Box 20's +	硬盒特長健牌廿枝裝 +	12	1.0
MARLBORO 100's Box 20's +	特長萬寶路硬盒廿枝裝 +	12	1.0
MARLBORO 100's Soft P. 20's +	特長萬寶路廿枝裝 +	12	0.9
BENSON & HEDGES Special Filter (Box) 20's	金邊臣廿枝裝	13	1.1
DUNHILL King Size Filter Deluxe (Box) 20's	登喜路廿枝裝	13	1.0
HILTON Kings (Soft P.) 20's	希爾頓廿枝裝	13	0.9
HILTON Kings Box 20's	硬盒希爾頓廿枝裝	13	0.9

# 香煙的焦油及尼古丁含量 TAR AND NICOTINE YIELDS OF CIGARETTES

由政府化驗師從2001年1月至12月所收集的樣本測定

As determined by the Government Chemist from samples obtained during the period of January - December 2001

牌子 BRAND	焦油(毫克/每枝) TAR YIELD (mg/cig)	尼古丁(毫克/每枝) NICOTINE YIELD (mg/cig)	
KENT King Size (Soft P.) 20's +	健牌廿枝裝 +	13	1.0
KENT King Size Box 20's +	硬盒健牌廿枝裝 +	13	0.9
MARLBORO King Size Box 20's +	萬寶路硬盒廿枝裝 +	13	1.0
MARLBORO King Size Soft P. 20's +	萬寶路軟包廿枝裝 +	13	1.0
MARLBORO Menthol KS Box 20's +	萬寶路薄荷硬盒廿枝裝 +	13	0.9
SALEM Menthol Fresh Box 20's +	硬盒沙龍廿枝裝 +	13	1.0
SARATOGA Menthol 120's Box 20's +	薄荷西加特廿枝裝 +	13	1.0
STATE EXPRESS 555 Filter Kings (Box) 20's	長三個五廿枝裝	13	1.1
WINFIELD Box 25's +	威豪硬盒廿五枝裝 +	13	1.0
DOUBLE HAPPINESS Filter Deluxe (Box) 20's	硬盒紅雙喜廿枝裝	14	1.0
DOUBLE HAPPINESS Filter Tipped KS (Soft P.) 20's	紅雙喜廿枝裝	14	0.9
DOUBLE HAPPINESS King Size 50's	罐裝紅雙喜五十枝裝	14	1.0
DOUBLE HAPPINESS Super Longs (Soft P.) 20's	特長紅雙喜廿枝裝	14	1.1
FURONGWANG Filter Box 20's	芙蓉王濾咀廿支裝	14	0.9
GOOD COMPANION King Size Box 20's	硬盒良友長煙廿枝裝	14	1.1
VICEROY Filter Kings (Soft P.) 20's	總督廿枝裝	14	0.9
WINSTON 100's (Soft P.) 20's +	金裝雲絲頓廿枝裝 +	14	1.2
WINSTON King Size (Soft P.) 20's +	軟包雲絲頓廿枝裝 +	14	1.2
WINSTON KS Box 20's +	硬盒雲絲頓廿枝裝 +	14	1.2
<b>焦油含量高(15-17毫克焦油/每枝) HIGH TAR (15-17 mg tar/cigarette)</b>			
CAMEL Filters Box 20's +	硬盒駱駝濾咀廿枝裝 +	15	1.2
HONGTASHAN Box 20's +	紅塔山廿枝裝 +	15	1.3
L & M Soft P. 20's	新時代香煙廿枝裝	15	1.1
PHILIP MORRIS Menthol 100's (Soft P.) 20's +	特長薄荷金徽 100 廿枝裝 +	15	1.1
PHILIP MORRIS Menthol 100's Box 20's +	特長薄荷金徽 100硬盒廿枝裝 +	15	1.1
ROTHMANS KS (Box) 20's	樂富門廿枝裝	15	1.1
VICEROY Filter 100's Box 20's	硬盒特長總督廿枝裝	15	1.0
VICEROY King Size Filters Box 20's	總督硬盒廿枝裝	15	1.0
CAMEL Non-Filter (Soft P.) 20's (P)	駱駝廿枝裝(無濾咀)	16	1.3
CHESTERFIELD Filter King (Soft P.) 20's	長吉時廿枝裝	16	1.2
DAHONGYING Filter Box 20's +	大紅鷹濾咀廿支裝 +	16	1.3
HILTON Superlongs Box 20's	硬盒特長希爾頓廿枝裝	16	1.1
LUCKY STRIKE M.F.T.(Soft P.) 20's (P)	標準好彩廿枝裝 (無濾咀)	16	1.1
MARVELS Filter Kings (Soft P) 20's	長仔寶廿枝裝	16	1.2
MORE Filters Box 20's	濾咀多好廿枝裝	16	1.3
PEONY Filter (Box) 20's	牡丹硬盒廿枝裝	16	1.2
YUN YAN Box 20's	極品雲煙廿枝裝	16	1.2
CHUNGHWA Filter Kings (Box) 20's +	中華香煙廿枝裝 +	17	1.5
LIUSHUIYIN King Size Filter Box 20's	硬盒特製紅中海廿支裝	17	1.1
MORE Menthol 120s (Soft P.) 20's +	薄荷多好廿枝裝 +	17	1.3

## 註：

- 表中數字是整個抽樣期間的平均數值。
- 同一焦油數值的香煙按牌子的英文字母順序排列。
- 除特別標明(無濾咀)外，其餘皆屬濾咀香煙。
- 附+符號的牌子，表示濾咀上有針孔，吸煙時針孔被全部或部分封閉，所產生的焦油可能比檢定為高。
- 根據ISO 4387:1991、ISO 10362-1:1991及ISO 10315:1991標準檢定。
- 根據國際標準化組織及亞洲共同研究(1993至1997年)的資料，檢測的不確定度如下：  

平均焦油量(毫克)	不確定度(±毫克)
1至4	1
5至9	1.5
10至14	1.7
15至17	1.9
平均尼古丁量(毫克)	不確定度(±毫克)
0.1至0.4	0.1
0.5至1.0	0.15
1.1至1.5	0.2

## Remarks :

- The published figures represent mean values of determinations undertaken over the whole sampling period.
  - Brands with the same figure for tar yields are listed in alphabetical order.
  - (P) indicates plain cigarettes. All other brands have filters.
  - Brands marked with + are found to have "PINHOLES" on the filter overwraps. Tar yields might be greater than the values reported when these holes are blocked either partially or completely during smoking.
  - Methods employed for the determination are ISO 4387:1991, ISO 10362-1:1991, and ISO 10315:1991.
  - The estimates of uncertainty for the methods summarized below are based on data published by the International Organization for Standardization and results reported by Asia Collaborative Study from 1993 to 1997.
- |                        |                  |
|------------------------|------------------|
| Mean tar yield,mg      | Uncertainty, ±mg |
| 1 to 4                 | 1                |
| 5 to 9                 | 1.5              |
| 10 to 14               | 1.7              |
| 15 to 17               | 1.9              |
| Mean nicotine yield,mg | Uncertainty, ±mg |
| 0.1 to 0.4             | 0.1              |
| 0.5 to 1.0             | 0.15             |
| 1.1 to 1.5             | 0.2              |